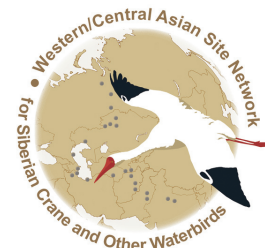


# Western/Central Asian Site Network for the Siberian Crane and Other Waterbirds

## Durnaly Turkmenistan



### Date of Designation

18 May 2007

### Coordinates

36°50'N, 60°45'E

### Area

175,000 ha

### Overview

The site is located in the foothills of the Eastern Kopetdag Mountain Range, bordering the Tedzhen floodplains to the east and Karakumdaria River to the north. The site has rarified vegetation, partially developed for irrigation land cultivation: grain (wheat, barley) and a lesser extent for forage cultures and cotton. Surface waters are created due to natural flow of the Meana-Chaacha Rivers, and also due to artificial watering along small channels from the Tedzhen and Karakumdaria Rivers.



### Importance for the Siberian Crane

Usually the Siberian Crane has not been recorded at this site. In over 100 years only one sighting has been registered – at a distance of 70 km northwest (near Dushak railway station) of the site. However Durnaly can be considered as an appropriate habitat for the Siberian Crane.



Photo by Eldar Rustamov

### Importance for other cranes and waterbirds

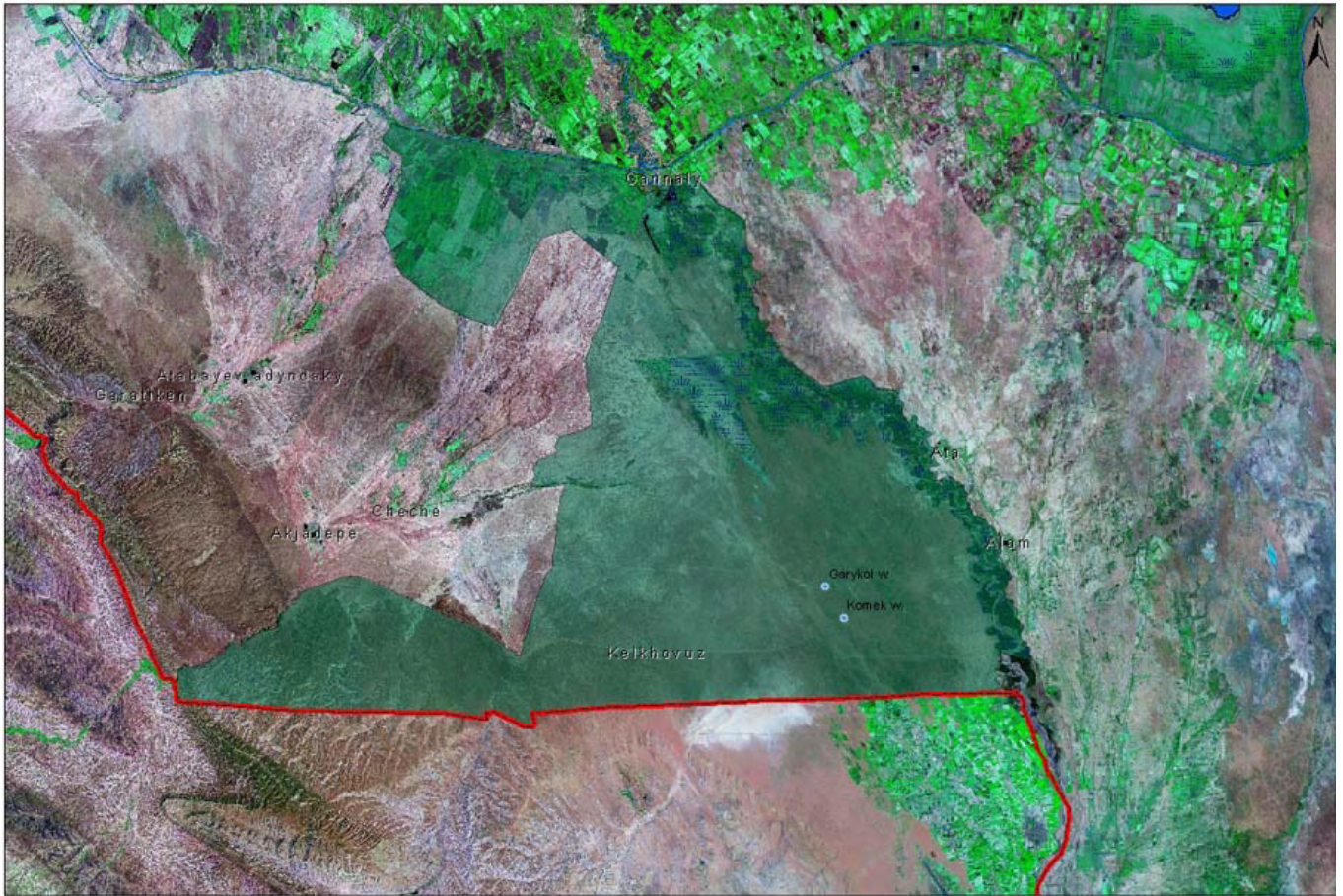
The site supports migrating and wintering Eurasian Cranes and as a “bottle neck” for regular seasonal migration of cranes. During spring migration the Eurasian Crane number is up to 11,975, during autumn migration – up to 8,220 birds, during the winter – from 600 to 1,300-1,700.

The Durnaly site regularly supports over 5 thousand waterbirds at one count during migration. The northern and eastern sites of the territory are crossed by Mallards, Coots, Red-crested and Common Pochards, Tufted Ducks, Great and Pygmy Cormorants, Grey Herons, Great Egrets, grebes, gulls and sandpipers, with the total number of over 20 thousand birds. Some of them (Greylag Geese, Ruddy Shelducks, Mallards, Cormorants and others) stay here for winter.

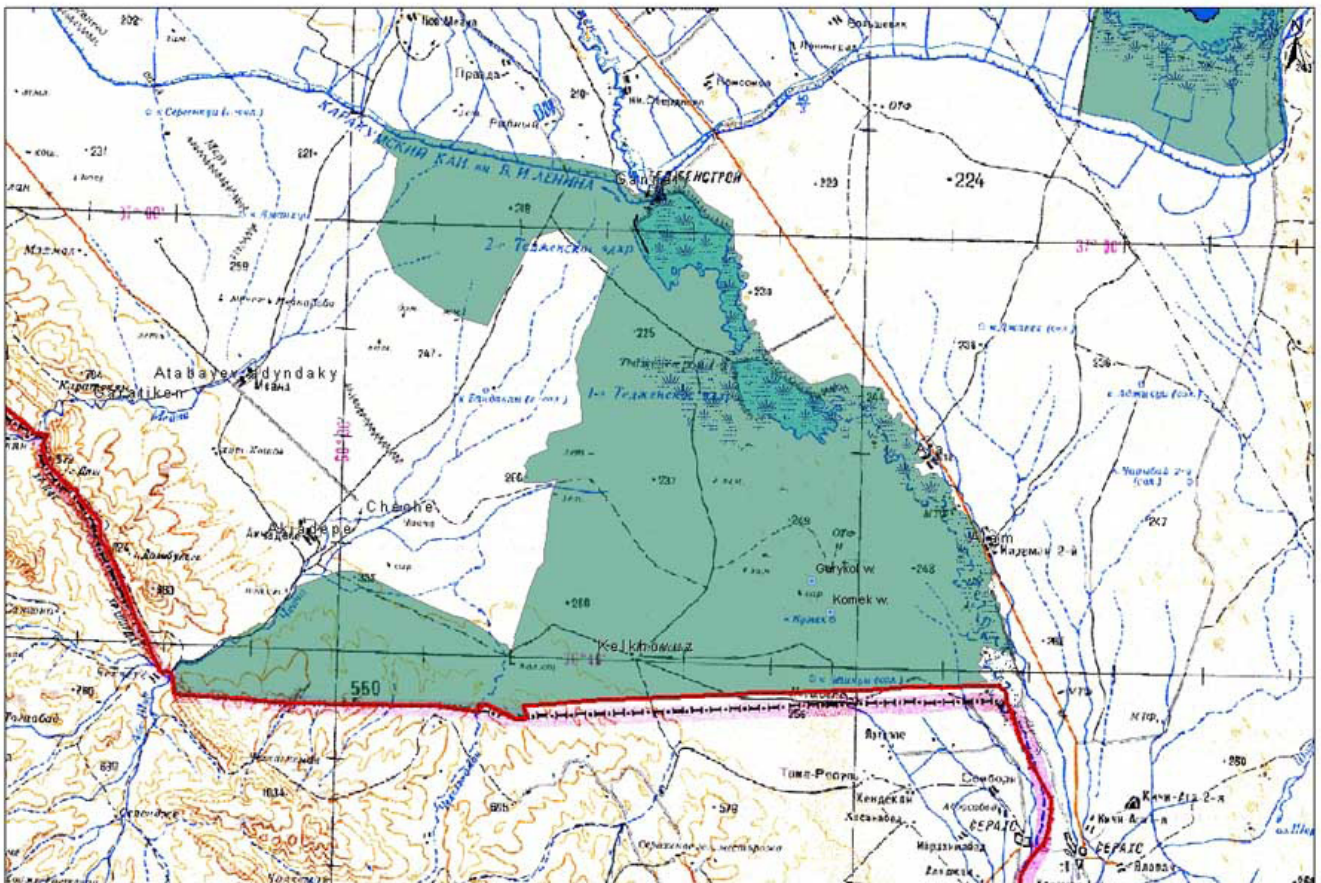


Photo by Evgenia Lanovenko

# Maps of Durnaly



0 4 325 8 650 17 300 25 950 34 600 Meters



0 4 325 8 650 17 300 25 950 34 600 Meters